

# SOUTH COUNTY HEALTH

## 2021-22 PHARMACY RESIDENCY PROGRAM

### SOUTH COUNTY HEALTH

South County Health (SCH) is a full-service healthcare resource offering a comprehensive range of advanced inpatient, outpatient and home health services. Accredited by The Joint Commission (TJC), South County Health is made up of South County Hospital, South County Medical Group, South County Home Health, and South County Surgical Supply.

South County Hospital (SCH), part of South County Health, located in the beachside community of Wakefield, RI, is a Joint Commission Accredited, 100-bed acute care community hospital.

Within the SCH community, you will hear a lot about our guiding values of integrity, caring, respect, excellence, partnership, and stewardship. To all of us working to ensure that our patients and their families receive the best possible care, these values have great meaning.

We are dedicated to the highest level of expertise and technology in a setting focused on comfort, convenience, privacy, and well-being.

**Type:** Community

**Beds:** 100 Licensed

- Telemetry Unit
- Orthopedic Unit
- Med Surg Unit
- Obstetric Unit
- 8 bed ICU
- 27,000 ER Visits annually
- Cancer Center

### Awards & Recognitions

- Press Ganey Pinnacle of Excellence
- CMS 5 Star Rating
- Leapfrog "A" Safety Score
- Women's Choice Award-Obstetrics
- Blue Cross Blue Shield Distinction Center for Hips/Knees

### Purpose Statement

The PGY1 Residency Program at South County Health builds on pharmacy education and outcomes to contribute to the development of clinical pharmacists responsible for medication related care of patients with a wide range of conditions; prepares them to be eligible for board certification and for eligibility for post graduate two (PGY2) pharmacy residency training.

### Pharmacy Services

- IV Admixture
- Anticoagulation Management
- Pharmacist Renal Dosing
- Pharmacist Vancomycin Dosing
- Drug Information Support
- ICU Rounding
- Code Participation
- Pain Consultations
- Medication Reconciliation
- Discharge Counseling
- CHF & Medication Teaching
- Cancer Center Pharmacist
- Anticoagulation Clinic
- MTM Clinic
- Opioid Sparring Protocol management
- Committee Involvement
- Medication Safety
- Antimicrobial Stewardship

## PGY1 PHARMACY PRACTICE AT SOUTH COUNTY HEALTH

**Status:** Accredited

**Application Deadline:** January 3, 2022

**Beginning Date:** June 27, 2022

**Number of Residents:** 2

**NMS Code:** 208413

**Stipend:** \$40,000

**Benefits:** Medical, Dental, 403(b), 27 PTO days (10 allowed during residency), PTO Cash Out, Food Allowance

### Requirements:

Accredited School of Pharmacy Graduate, eligible for RI licensure, personal interview, submission of a letter of interest, curriculum vitae, application, pharmacy school transcript, three letters of recommendation.

The South County Health PGY1 Residency is primarily located at South County Hospital, the University of Rhode Island for Drug Information and teaching opportunities, the Anticoagulation Management Clinic, the Cancer Center, and the Westerly and East Greenwich Wellness Centers.

### Information:

[southcountyhealth.org/careers/pharmacy-residency-program](http://southcountyhealth.org/careers/pharmacy-residency-program)

### Contact:

Marissa Palm, Pharm.D., CDOE, Residency Program Director

Email: [mpalm@southcountyhealth.org](mailto:mpalm@southcountyhealth.org)

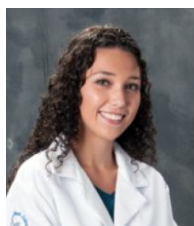
Phone: 401-788-1823

Address: South County Health

100 Kenyon Avenue

Wakefield, RI 02879

## 2021 - 2022 Residents



**Katherine McCann, Pharm.D.**

**School:** University of Rhode Island

**Project:** The Rate of Hospital Readmissions in Patients with CHF Before and After Implementation of Pharmacist-Driven Transitions of Care Interventions

[kmccann@southcountyhealth.org](mailto:kmccann@southcountyhealth.org)



**Ryan Virgin, Pharm.D.**

**School:** University of Rhode Island

**Project:** Evaluation of Length of Hospital Stay Before and After Implementation of Hemoglobin A1c Testing Protocol in a Small Community Hospital

[rvirgin@southcountyhealth.org](mailto:rvirgin@southcountyhealth.org)

## The Program

### The Community

Located in the southernmost edge of Rhode Island, you will find one of New England's most-loved vacation spots, South County. Blessed by nature, this scenic area is filled with miles of sandy beaches, wildlife preserves, parks, and hiking areas.

---

*Voted one of the 12 best places to vacation in North America*  
- Money Magazine

---

Conveniently nestled about 30 minutes outside of Providence by car, South County is the epitome of a classic New England getaway. South County is 80 miles south of Boston and 160 miles from New York City.

### Required Rotations

- Orientation (6 weeks)
- ICU/Critical Care (4 weeks)
- Internal Medicine (6 weeks)
- Oncology/Infusion Therapy (6 weeks)
- Drug Information (4 weeks)
- Cardiology (4 weeks)
- Anticoagulation (4 weeks)
- Emergency Medicine (4 weeks)
- Administration/Leadership (4 weeks)
- Antimicrobial Stewardship (4 weeks)

### Longitudinal Rotations

- Pharmacy Practice
- Informatics
- Teaching
- Research

### Elective Rotations

- Transitions of Care
- Medication Safety/Informatics
- Advanced Critical Care
- Concentrated Academia
- Longitudinal Diabetes